

FOR SALE

Pine Hills Golf Course - Laingsburg, Michigan



\$450,000 Asking Price



PINE HILLS GOLF COURSE

- **Pine Hills Golf Course**
- 6603 Woodbury - Laingsburg, Michigan
- www.golfpinehills.com
- **Architect - Bruce Matthews**
- 5,138 yards
- Slope of 118
- Opened 1961
- Clubhouse - 1,200 square feet



PINE HILLS GOLF COURSE

- 120 acres (41 are leased from the City of Laingsburg)
- Irrigation water from 2 on site wells and holding ponds
- Bent and Poa greens, tees and fairways
- Quick couple irrigation system
- Full Maintenance Equipment list upon request



PINE HILLS GOLF COURSE

Acquisition Opportunity





Pine Hills is a well established daily fee golf course in, Laingsburg, Michigan. The course features a fair but challenging 18 hole golf layout along with a small yet functional clubhouse. The golf course winds through mature woods and wet lands and presents a challenge for golfers of all skill levels. Priced to sell at \$450,000, Pine Hills is a tremendous opportunity for an existing golf course owner or a first time buyer looking for a chance to break into the golf business.

- Well regarded daily fee golf course
- Excellent opportunity for owner operator
- Clubhouse is small and easy to operate
- Club needs new owner with aggressive marketing campaign to increase rounds and revenue

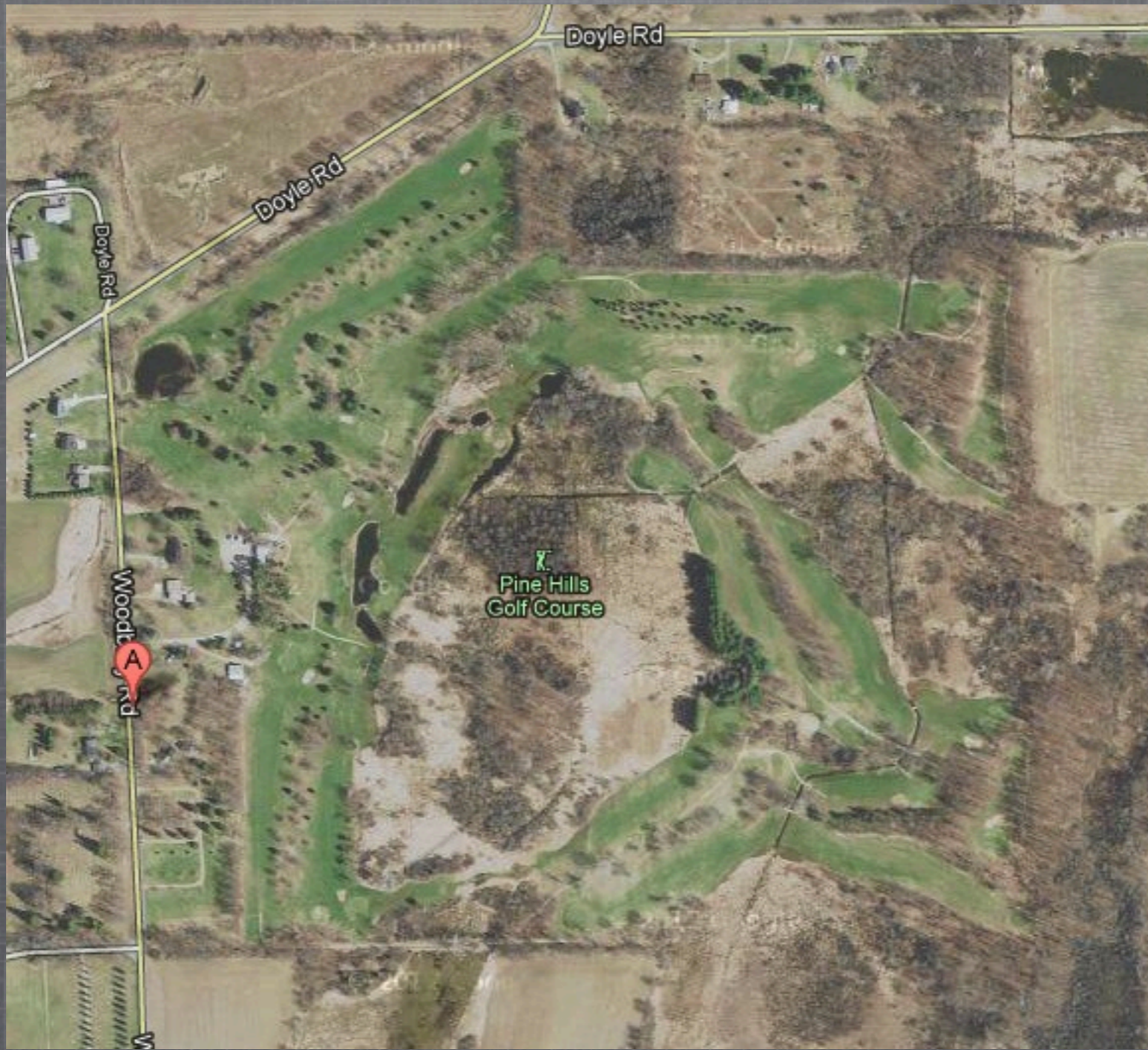


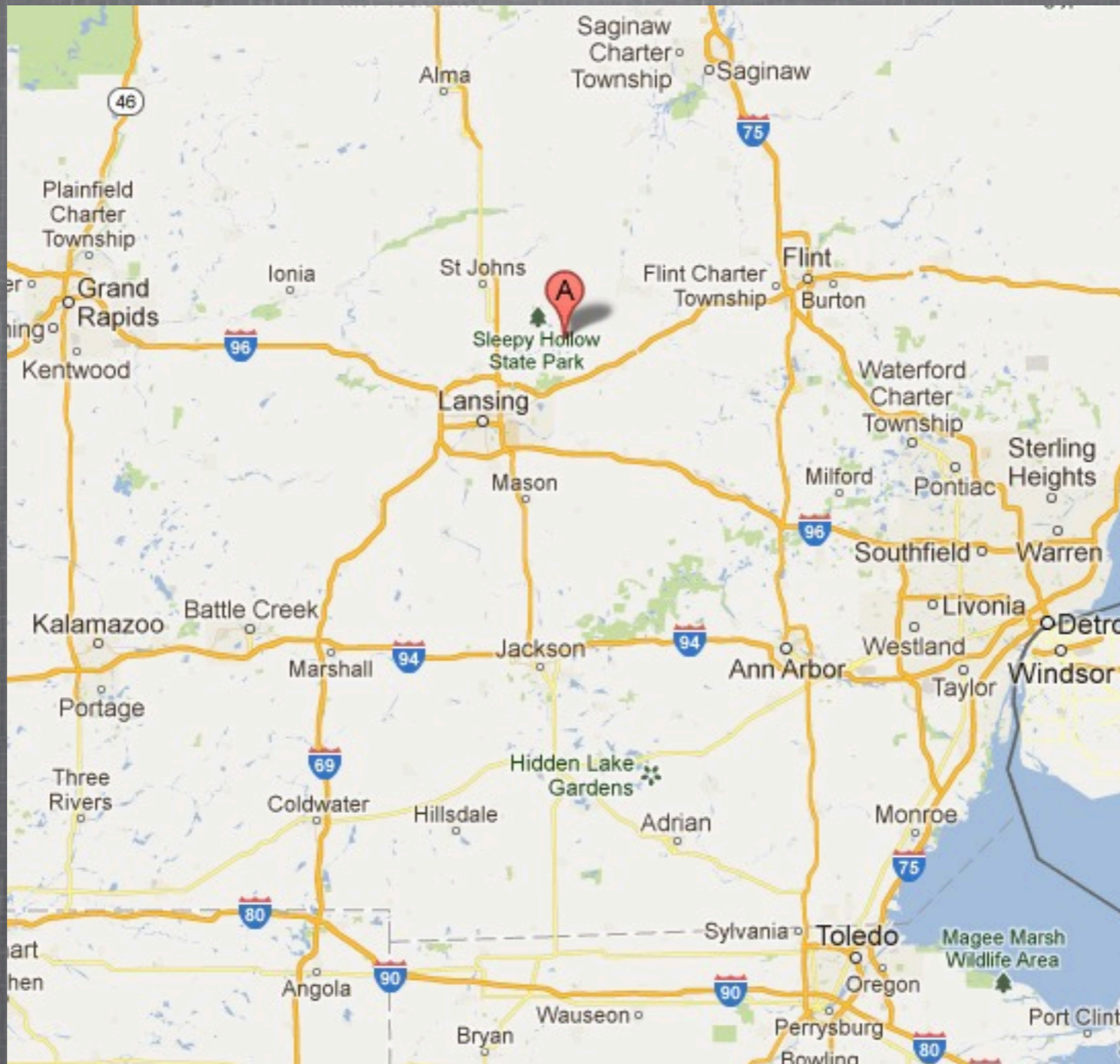
LOCAL AND COURSE RULES

- Start ONLY on holes assigned by clubhouse attendant.
- 100, 150, and 200 yard markers are red, white, and blue discs on each side of the fairway.
- Shelters  are located near #3, #6, and #16 greens. If alarm is sounded at clubhouse, leave clubs and seek shelter or return to clubhouse.
- Pace yourself to finish in four hours or less.
- Replace divots, fix ball marks, and rake the bunkers.
- Yardages are measured to the center of green.
- After unsuccessful shot attempt over wetlands, you may drop ball green side of wetland in drop area, one stroke penalty.
- Proper attire required on the course and in the clubhouse.
- Flag colors:
Red - Front
White - Middle
Blue - Back

- | | |
|----------------------------------------------------------------------------------------------|---------------------------------------------------------------------------------------------|
|  Wetlands |  Shelter |
|  Water |  Trees |







For Additional information, please contact

Chris Charnas

Links Capital Advisors, Inc.

office 847-866-7192

cell 312-543-7192

chris@linkscapitaladvisors.com

www.linkscapitaladvisors.com

