

FOR SALE
Elks Run Golf Club - Batavia, Ohio



\$3.2 Million Asking Price
Bank Owned



HOST SITE FOR THE US
AMATEUR QUALIFIER –
1999 & 2000



ELKS RUN GOLF CLUB

- Elks Run Golf Club
- 2000 Elklick Road, Batavia, OH
- www.elksrun.com
- Architect - Greg Norman
- 6,833 yards
- Slope of 131
- Opened 1996
- Clubhouse - 7,800 square feet



ELKS RUN GOLF CLUB

- 163 acres
- Irrigation water from on site river
- Continuous 6 foot concrete cart paths
- Bent grass greens, tees and fairways
- Automatic Toro irrigation system with 1,116 irrigation heads
- Full Service Clubhouse including; bar, restaurant, rest rooms and pro shop.
- Full Maintenance Equipment list upon request



ELKS RUN GOLF CLUB

Acquisition Opportunity

Situated on 163 acres of lush rolling hills in Batavia, Ohio, Elks Run Golf Course is a 6,833-yard championship design that is both challenging and enjoyable to play.

After being closed for more than a year the course was overhauled and reopened with \$464,000 spent on equipment.

Featuring bentgrass greens, tees and fairways, this Greg Norman design takes advantage of the rolling hills and creeks to provide a course that works within its natural characteristics. Though Elks Run is a test of strategy and skill, it is also fair and honest. A new owner with a fresh approach to customer service can turn this Norman design into the premier golfers destination in the region.

- Greg Norman Design
- Highly regarded daily fee golf course
- Excellent demographics in local area
- Full service clubhouse with growth opportunities for golf and food & beverage
- Club needs new owner with aggressive marketing campaign to increase rounds and revenue





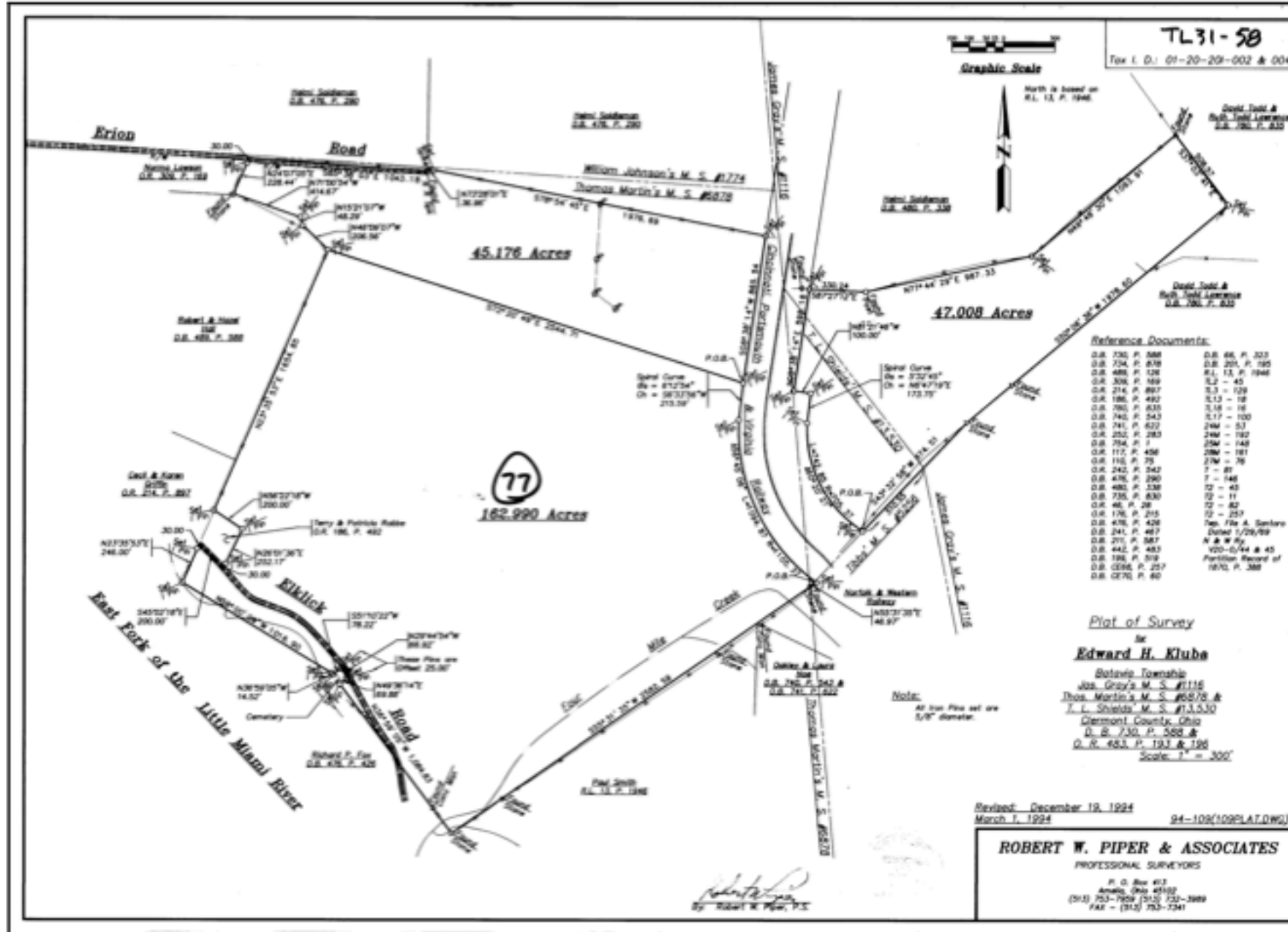
HOLE	1	2	3	4	5	6	7	8	9	OUT	INITIALS	10	11	12	13	14	15	16	17	18	IN	OUT	TOT	HANDICAP	NET SCORE
BLACK 72.9/138	353	195	517	475	550	412	363	156	407	3428		366	410	154	388	430	539	445	228	457	3417	3428	6845		
BLUE 71.3/136	335	175	508	460	535	387	335	136	379	3250		355	380	144	379	390	517	435	216	420	3236	3250	6486		
WHITE 69.3/132	312	151	493	409	511	372	307	121	348	3024		333	374	136	346	372	491	409	199	369	3029	3024	6053		
GOLD 70.7/134	256	125	434	366	432	344	267	96	307	2630		310	342	116	301	330	443	361	158	343	2704	2630	5334		
PAR	4	3	5	4	5	4	4	3	4	36		4	4	3	4	4	5	4	3	4	35	36	71		
MATCH +/-																									
HANDICAP	17	5	7	1	9	3	11	13	15			14	16	18	6	4	8	10	12	2					





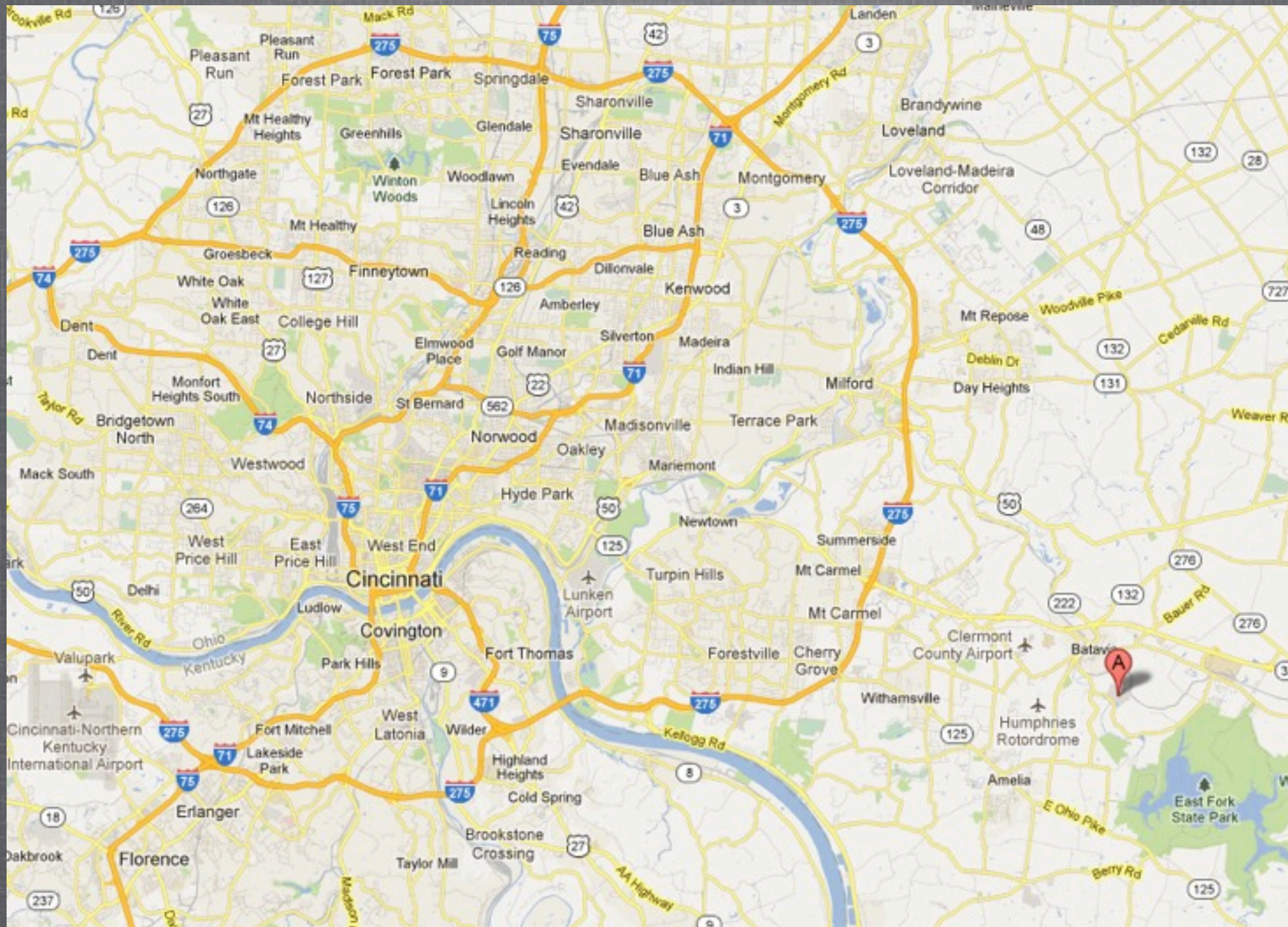
Emily
Emily





SUBJECT SURVEY





For Additional information, please contact

Chris Charnas

Links Capital Advisors, Inc.

office 847-866-7192

cell 312-543-7192

chris@linkscapitaladvisors.com

www.linkscapitaladvisors.com

